



Universal Cable System

NÖRDOST

MAKING THE CONNECTION



LEIF *(pron; life)*



Discover A Whole New World...

1000 years ago, nearly 500 years before Columbus, Leif Erikson discovered America. It took a while, but from that day forward, the World would never be the same again...

20 years ago, Nordost introduced the Flatline loudspeaker cable, a true breakthrough in audio performance. In its own modest way, it too changed our World...

Now, two decades on, and with the experience of the all-conquering Valhalla and Odin cables behind us, cables that redefined our notion of what was possible from hi-fi systems – and what was holding them back – it's time to revisit our entry level range, applying the lessons learned along the way. What you use is critical – the materials, the geometry, the connectors – but so too is how (and where) you use it. Odin and Valhalla taught us unexpected lessons and defined new priorities. Applying that knowledge to the new Leif Series has redefined what is possible from affordable audio cabling. New designs, manufactured and terminated in the USA and combined with a new strategy, have extended the

horizons of musical performance, creating a dynamic, straight-line, low-loss solution to the problems of AC and audio signal transfer, capable of releasing astonishing performances from even modest electronics and speakers. Use the right cables, use them in the right way and use them right through the system and you'll be amazed by the power of your music and your movies.

Leif Series cables from Nordost –

*Leif by name,
life by nature*

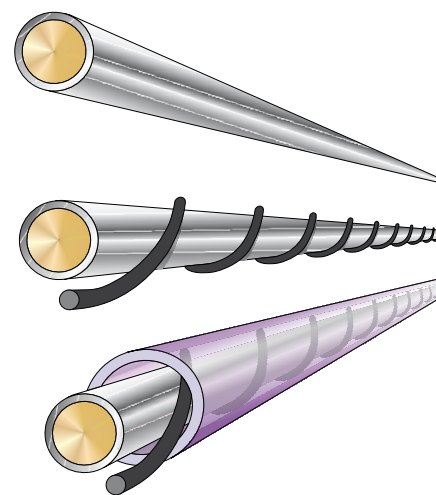


Start At The Beginning...

Which is the single most important cable in a hi-fi system? The one coming out of the wall!

Cables like Nordost's supreme reference, the Odin, have thrown open a new window on system performance, revealing the critical part played in musical reproduction by superior power cords. Why? Because the AC supply is, quite literally, delivering the raw material from which your system will recreate the recorded musical performance. And just like a sculpture, the texture and quality of that raw material has a profound effect on the finished article.

In recognition of this crucial role, we have employed our proprietary Micro Mono-Filament construction throughout the power cords in the Leif Series. First used in the ground-breaking Valhalla cables, this elegant design delivers the



near perfect combination of a virtual air dielectric with excellent mechanical damping and FEP insulation. The result is a range of ultra-fast, low-loss cables that maintain the all-important low source impedance of the AC supply, while also providing superior grounding, creating a firm foundation on which your system can build its musical performance. These Micro Mono-Filament power cords deliver the AC supply without slowing or current limiting, allowing your system to respond to the dynamic demands of the musical signal. The result can be heard at both ends of the scale, in the sheer impact that comes with real instrumental presence and explosive dynamics, and the colour, texture and intimacy that brings a voice or solo instrument to life.

Unlocking
the power in
your system's
performance



Power Cables

PURPLE FLARE POWER CORD

Insulation: Fluorinated Ethylene Propylene(FEP)
Construction: 2x 16 AWG Micro Mono-Filament
Conductors: 65 strand 99.9999 OFC
Capacitance: 10.0pF/ft
Inductance: 0.155uH/ft
DC Resistance: 4.4 Ohms/1000ft/304M
Power Rating: 3 Amps
Approval: UL approved
Termination: US (NEMA), EU (Schuko), UK (13 Amp) or AUS to Figure 8

BLUE HEAVEN POWER CORD

Insulation: Fluorinated Ethylene Propylene(FEP)
Construction: 3x 16 AWG Micro Mono-Filament
Conductors: 65 strand 99.9999 OFC
Capacitance: 10.0pF/ft
Inductance: 0.155uH/ft
DC Resistance: 4.4 Ohms/1000ft/304M
Power Rating: 10 Amps
Approval: UL approved
Termination: US (NEMA), EU (Schuko), UK (13 amp) or AUS to 15 or 20 Amp IEC



Interconnect Cables

WHITE LIGHTNING
Insulation: Fluorinated Ethylene Propylene (FEP)
Construction: 4 x 26 AWG
Conductors: Silver plated 99.9999 OFC solid-core
Capacitance: 43.0pF/ft
Inductance: 0.046uH/ft
Overall Shield Coverage: 95% Braid
Propagation Speed: 85% the speed of light
Termination: RCA or XLR

PURPLE FLARE
Insulation: Fluorinated Ethylene Propylene (FEP)
Construction: 6 x 26 AWG
Conductors: Silver plated 99.9999 OFC solid-core
Capacitance: 55.0pF/ft
Inductance: 0.037uH/ft
Overall Shield Coverage: 95% Braid
Propagation Speed: 85% the speed of light
Termination: RCA or XLR

BLUE HEAVEN LS
Insulation: Fluorinated Ethylene Propylene (FEP)
Construction: 4 x 24 AWG
Conductors: Silver plated 99.9999 OFC solid-core
Capacitance: 45.0pF/ft
Inductance: 0.046uH/ft
Overall Shield Coverage: 95% Braid
Propagation Speed: 85% the speed of light
Termination: RCA or XLR

RED DAWN LS
Insulation: Fluorinated Ethylene Propylene (FEP)
Construction: 6 x 24 AWG
Conductors: Silver plated 99.9999 OFC solid-core
Capacitance: 60.0pF/ft
Inductance: 0.035uH/ft
Overall Shield Coverage: 95% Braid
Propagation speed: 85% the speed of light
Termination: RCA or XLR

Core Values...

If you want to sum up the performance goals of a good audio interconnect, then, “Nothing added, nothing taken away” does a pretty good job. What most people don’t appreciate is just how succinctly that sums up the required physical construction too!

Leif Series interconnects are models of elegant engineering, their combination of silver-plated, OFC solid-core conductors with superior FEP dielectric creates cables with exceptional cross-sectional precision. A woven shield in the same, silver-plated copper material is encased in a final layer of FEP, resulting in a cable with all

the elements that you need – and none that you don’t; no padding or unnecessary fillers, no bulky external sleeves. In fact nothing designed to make the cable look bigger or seem more “impressive”, because it’s not what it looks like that matters, but how it sounds, and every extra element you add comes with its own sonic cost. Pad a cable out with unnecessary elements and it sounds, well — padded...



This minimalism extends to the choice of connectors. Nordost selected the best, most reliable and sonically consistent, low-mass plugs for the Leif Series. After all, why eliminate unnecessary extra material from the cable and then simply throw away the benefits by using connectors that are over-engineered and over-weight? Instead, each Leif interconnect, from the White Lightning to the Red Dawn, is a carefully studied exercise in high-performance minimalism, form focussed unerringly on function.

*Sound engineering
 — in every sense*

Information Super Highway...

When Nordost launched the original Flatline speaker cable, its unique, extruded FEP construction delivered a combination of minimal capacitance, inductance and dielectric effect that, combined with the quality of the materials employed, produced a lightning fast, low-loss performance that brought music to life.

Now, that original design has evolved even further. Silver-plated, OFC, round section solid core conductors, developed directly from our experience with Odin and Valhalla, offer even greater air and subtle detail, while further reducing dielectric effect. The dimensions of the Leif Series cables and the spacing of the conductors have been further optimized, building on the inherent mechanical precision and stability of the extruded construction, the low-mass ideal being carried over to the carefully selected



Z-plug and spade terminations. The cables are specifically designed for the single-wiring of loudspeakers, experience showing that this approach, combined with dedicated jumpers where necessary, produces more coherent musical results. The flat profile also means that they can easily be doubled up for bi-amping where this proves preferable.

The Leif Series speaker cables represent a significant evolution in the Flatline story. Retaining the essential engineering elegance of the original design, experience has taught us how to extract even greater performance from an deceptively simple recipe, a benefit you'll hear in the musical performance of your system.

Flat and fast — because it's the performance that matters



Loudspeaker Cables

WHITE LIGHTNING

Insulation: Fluorinated Ethylene Propylene (FEP)
Construction: 10 conductors 16 AWG
Conductors: Silver plated 99.9999 OFC solid-core
Capacitance: 8.7pF/ft
Inductance: 0.18uH/ft
Propagation Speed: 94% the speed of light
Termination: Spade or banana

PURPLE FLARE

Insulation: Fluorinated Ethylene Propylene (FEP)
Construction: 14 conductors 15 AWG
Conductors: Silver plated 99.9999 OFC solid-core
Capacitance: 9.25pF/ft
Inductance: 0.17uH/ft
Propagation Speed: 95% the speed of light
Termination: Spade or banana

BLUE HEAVEN LS

Insulation: Fluorinated Ethylene Propylene (FEP)
Construction: 16 conductors 14 AWG
Conductors: Silver plated 99.9999 OFC solid-core
Capacitance: 9.6 pF/ft
Inductance: 0.16 uH/ft
Propagation Speed: 96% the speed of light
Termination: Spade or banana

RED DAWN LS

Insulation: Fluorinated Ethylene Propylene (FEP)
Construction: 20 conductors 12 AWG
Conductors: Silver plated 99.9999 OFC solid-core
Capacitance: 10.0pF/ft
Inductance: 0.155uH/ft
Propagation speed: 96% the speed of light
Termination: Spade or banana



Back To The Beginning...

When it comes to passing audio signals, any system based around a single-box CD player, amplifier(s) and speakers simply needs one type of analog interconnect and some speaker cables to do the job. But increasingly that's not the sort of systems we use. The advent of downloadable files and music servers, the increasing use of digital signal transfer and the re-emergence of vinyl as a popular source all create requirements for dedicated cable designs. And because so many of these applications revolve around source components, they occur right at the front of the system and where the signal is most fragile.

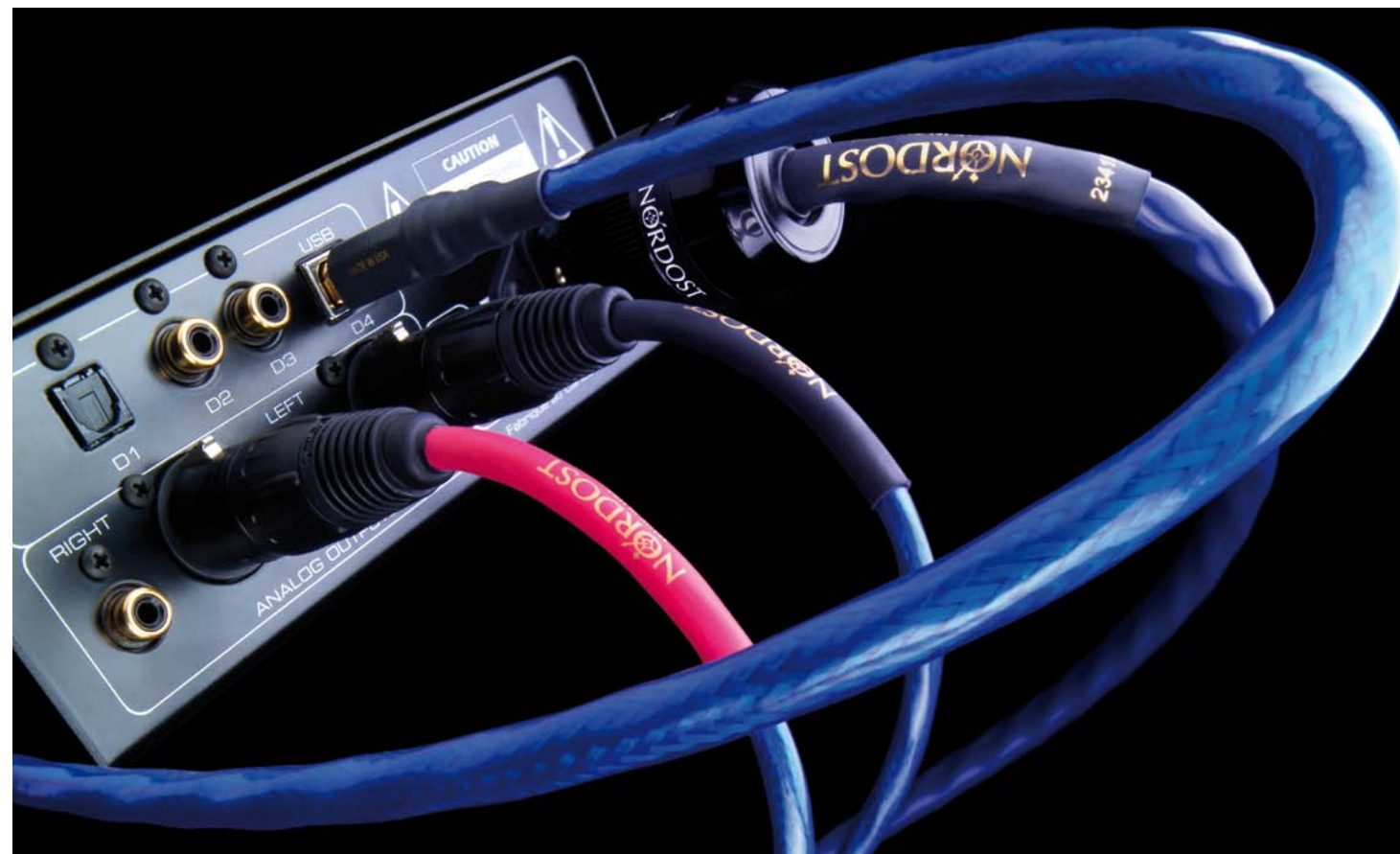
It might seem odd to describe digital data in those terms, but while the data itself is robust, its integrity depends on strict adherence to transfer standards, requiring accurate and consistent cables and termination to ensure that it arrives intact. The Leif Series offers a range of Micro Mono-Filament designs, manufactured and terminated in the USA and specifically optimized to meet the demands of the various, digital and video standards. This is no "one size fits all" solution, with the compromises inherent in

that approach. Instead, dedicated S/PDIF, USB and HDMI cables offer readily demonstrable performance benefits.

Likewise, the tiny signal produced by a phono cartridge (anywhere between 500 and 5000 times smaller than the output from most CD players) needs careful handling. The electrical characteristics of the tonearm cable directly affect the frequency balance and damping of the cartridge generator, making a dedicated signal cable essential to proper record replay. Standard interconnects just won't do.

The music or movies that come out of your system start with the recording stored on your disc (whether that's a CD, Blu-ray, LP or hard-drive). Don't let that performance fall at the first hurdle.

Because
"Front-
end first"
still makes
sense



Source Cables

BLUE HEAVEN LS TONEARM CABLE
Insulation: Fluorinated Ethylene Propylene (FEP)
Construction: 4 x 24 AWG plus 26 AWG Drain Wire
Conductors: Silver-plated 99.9999 OFC solid core
Capacitance: 45.0pF/ft
Inductance: 0.046uH/ft
Overall Shield Coverage: 98% Braid
Propagation Speed: 85% the speed of light
Termination: RCA or 5-pin Din (0° or 90°) with dual wire grounding

BLUE HEAVEN DIGITAL
Insulation: Fluorinated Ethylene Propylene (FEP)
Construction: 1x 24 AWG Micro Mono-Filament
Conductors: Silver-plated solid 99.99999 OFC solid core
Capacitance: 14.0pF/ft
Impedance: 75 ohm
Overall Shield Coverage: 95% Braid
Propagation Speed: 85% the speed of light
Termination: BNC with 75 Ohm RCA adaptor

BLUE HEAVEN USB 2.0
Insulation: Fluorinated Ethylene Propylene(FEP)
Construction: Micro Mono-Filament shielded pair
Conductors: 2x silver-plated OFC solid cores 2x 20 AWG 19 strand (power)
Shielding: Dual layer foil and braid
Propagation Speed: 86 % the speed of light
Termination: Type A or B USB

BLUE HEAVEN HDMI
Description: High Speed HDMI Cable with ETHERNET
Insulation: Fluorinated Ethylene Propylene(FEP)
Construction: Micro Mono-Filament
Conductors: Silver-plated 99.9999 OFC
Shielding: Dual 100 % braid and foil
Termination: HDMI



	White Lightning	Purple Flare	Blue Heaven	Red Dawn
Figure 8 Power Cord		●		
15/20A Power Cord			●	
Analog Interconnect	●	●	●	●
Balanced Interconnect	●	●	●	●
Speaker Cable	●	●	●	●
75 Ohm Digital			●	
USB 2.0			●	
HDMI			●	
Tonearm Lead			●	



MAKING THE CONNECTION

Nordost Corporation 200 Homer Avenue Ashland MA 01721 USA

Tel: +1 508 881 1116

Fax: +1 508 881 6444

Email: info@nordost.com

Website: www.nordost.com